

**ALFALFA COUNTY, OKLAHOMA
FINANCIAL STATEMENT
AND INDEPENDENT AUDITOR'S REPORT
FOR THE FISCAL YEAR ENDED JUNE 30, 2005**

This publication is printed and issued by the State Auditor and Inspector as authorized by 19 O.S. § 171. Pursuant to 74 O.S. § 3105, 35 copies have been prepared and distributed at a cost of \$90.80. Copies have been deposited with the Publications Clearinghouse of the Oklahoma Department of Libraries.



STATE OF OKLAHOMA
OFFICE OF THE AUDITOR AND INSPECTOR

JEFF A. McMAHAN
State Auditor and Inspector

September 26, 2006

TO THE CITIZENS OF
ALFALFA COUNTY, OKLAHOMA

Transmitted herewith is the audit of Alfalfa County, Oklahoma, for the fiscal year ended June 30, 2005. A report of this type is critical in nature; however, we do not intend to imply that our audit failed to disclose commendable features in the present accounting and operating procedures of the County.

We wish to take this opportunity to express our appreciation for the assistance and cooperation extended to our office during the course of our audit.

The Office of the State Auditor and Inspector is committed to serving the public interest by providing independent oversight and by issuing reports that serve as a management tool to the state to ensure a government which is accountable to the people of the State of Oklahoma.

Sincerely,

A handwritten signature in black ink that reads "Jeff A. McMahon". The signature is written in a cursive, flowing style.

JEFF A. McMAHAN
State Auditor and Inspector

**ALFALFA COUNTY, OKLAHOMA
FINANCIAL STATEMENT
FOR THE FISCAL YEAR ENDED JUNE 30, 2005**

TABLE OF CONTENTS

INTRODUCTORY SECTION (Unaudited)

Report to the Citizens of Alfalfa County	ii
County Officials and Responsibilities	iii
Ad Valorem Tax Distribution.....	viii
Computation of Legal Debt Margin	ix
Ratio of Net General Bonded Debt to Assessed Value and Net Bonded Debt Per Capita	x
Assessed Value of Property.....	xi

FINANCIAL SECTION

Report of State Auditor and Inspector.....	1
Basic Financial Statement:	
Combined Statement of Receipts, Disbursements, and Changes in Cash Balances (with Combining Information).....	3
Notes to the Financial Statement	4

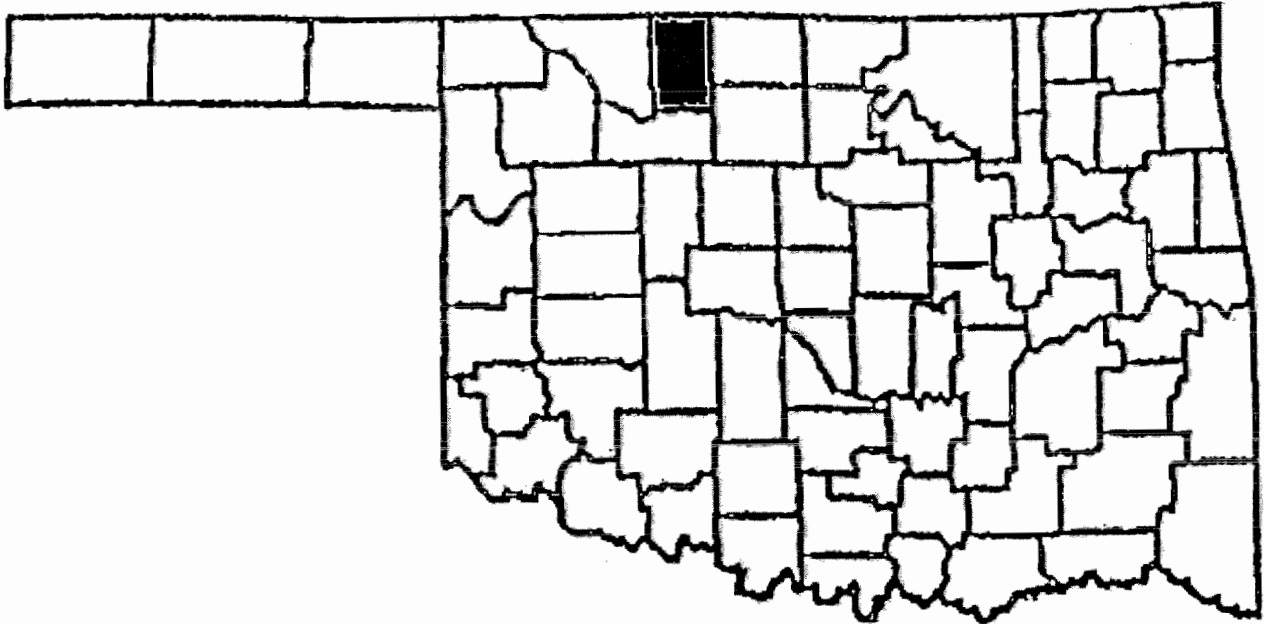
OTHER SUPPLEMENTARY INFORMATION

Comparative Schedule of Receipts, Expenditures, and Changes in Cash Balances—Budget and Actual—Budgetary Basis—General Fund	11
Notes to Other Supplementary Information.....	13

INTERNAL CONTROL AND COMPLIANCE SECTION

Report on Internal Control Over Financial Reporting and on Compliance and Other Matters Based on an Audit of Financial Statements Performed in Accordance With <i>Government Auditing Standards</i>	14
Schedule of Findings and Responses.....	16

**REPORT TO THE CITIZENS
OF
ALFALFA COUNTY, OKLAHOMA**



Alfalfa County is named for William H. "Alfalfa Bill" Murray, president of the Oklahoma Constitutional Convention and ninth governor of the State of Oklahoma. Principal contributions to the county's economy are wheat and grain sorghums, cattle raising, and oil production. Alfalfa County boasts such attractions as the Cherokee Salt Plains, located on the Salt Fork of the Arkansas River east of Cherokee; the Great Salt Plains Recreation Area, famous for its camping facilities, fishing, boating and crystal digs; the Sod House Museum in Aline; and the Game Reserve, noted for its Canadian geese, whooping cranes and other waterfowl.

County Seat - Cherokee

Area – 881.44 Square Miles

County Population - 5,810
(2004 est.)

Farms - 666

Land in Farms - 461,288 acres

Primary Source: Oklahoma Almanac 2005-2006

See independent auditor's report.

**ALFALFA COUNTY OFFICIALS
AND RESPONSIBILITIES
FOR THE FISCAL YEAR ENDED JUNE 30, 2005**

COUNTY ASSESSOR

Sonya Booher
(R) Burlington

The County Assessor has the responsibility to appraise and assess the real and personal property within the county for the purpose of ad valorem taxation. Also, the County Assessor is required to compute the ad valorem taxes due on all taxable property. The County Assessor appraises all the taxable real and personal property according to its fair cash value for which the property is actually being used as of January 1 of the taxable year at the percentages provided for in Article 10, § 8 of the Oklahoma Constitution.

The County Assessor is required to build and maintain permanent records of the taxable real property and tax exempt real property within the county. Information entered on each record includes the property's legal description, owner's name and address, and the homestead exemption status of the owner.

COUNTY CLERK

Bruce Martin
(R) Aline

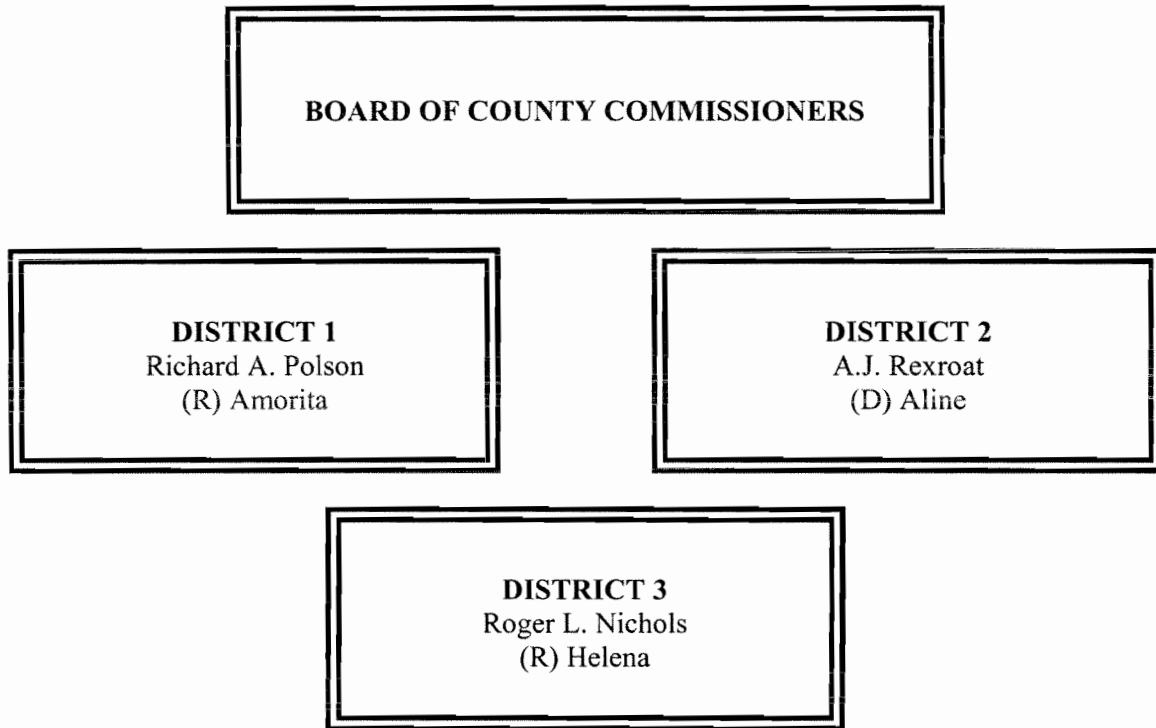
The County Clerk serves as the register of deeds and custodian of records for the county. The County Clerk also serves as the secretary to several boards, including the Board of County Commissioners, the County Excise Board, the County Board of Equalization, and the Board of Tax Roll Corrections.

The County Clerk reviews all the claims for payment of goods and services purchased or contracted by the county, and prepares the proper warrants for payment of those goods and services and the county payroll. The County Clerk, or his or her designated deputy, serves as the purchasing agent for the county. This system is a means to ensure the public that tax dollars are being spent appropriately.

Various records within the different county offices are classified as "open records." As such, they can be reviewed and mechanically copied by the public.

See independent auditor's report.

**ALFALFA COUNTY OFFICIALS
AND RESPONSIBILITIES
FOR THE FISCAL YEAR ENDED JUNE 30, 2005**



The Board of County Commissioners is the chief administrative body for the county. County Commissioners are also responsible for maintaining and constructing the county roads and bridges.

The Commissioners must act as a Board when entering into contracts or other agreements affecting the county's welfare. Thus, actions taken by the Board are voted on and approved by a majority of the Commissioners. The Board of County Commissioners' business meetings are open to the public.

As the county's chief administrative body, the three County Commissioners must make major financial decisions and transactions. The Board has the official duty to ensure the fiscal responsibility of the other county officers who handle county funds. The review and approval procedures empowered to the Board of County Commissioners are a means to provide the public with a fiscally efficient system of county government.

See independent auditor's report.

**ALFALFA COUNTY OFFICIALS
AND RESPONSIBILITIES
FOR THE FISCAL YEAR ENDED JUNE 30, 2005**

COUNTY SHERIFF

Charles Tucker
(R) Cherokee

The County Sheriff is responsible for preserving the peace and protecting life and property within the county's jurisdiction. As the county's chief law enforcement officer, the Sheriff has the power and authority to suppress all unlawful disturbances, to apprehend and secure persons charged with felony or breach of peace, and to operate the county jail.

The County Sheriff has the responsibility of serving warrants and processing papers ordered by the District Court.

COUNTY TREASURER

Carolyn Stands
(R) Cherokee

All collections by county government from ad valorem taxes and other sources are deposited with the County Treasurer. The County Treasurer collects ad valorem taxes for the county and its political subdivisions. The County Treasurer is authorized to issue delinquent personal property tax warrants and to impose tax liens on real property for delinquent taxes.

To account for county collections and disbursements, the County Treasurer is required to maintain an accurate record of all the monies received and disbursed. The State Auditor and Inspector's Office prescribes all the forms used by the County Treasurer, and at least twice a year inspects the County Treasurer's accounts.

See independent auditor's report.

**ALFALFA COUNTY OFFICIALS
AND RESPONSIBILITIES
FOR THE FISCAL YEAR ENDED JUNE 30, 2005**

COURT CLERK

Lori Irwin
(R) Aline

The Court Clerk has the primary responsibility to record, file, and maintain as permanent records the proceedings of the District Court.

Court proceedings are recorded in the appropriate journal or record docket. All the court proceedings are public information except those related to juvenile, guardianship, adoption, and mental health cases.

The Court Clerk issues marriage licenses, passports, notary certificates, beer and pool hall licenses, and private process server licenses.

Monies from the court fund are identified for distribution by the Court Clerk to the appropriate units of county and state government. Court Clerks use forms and follow procedures prescribed by the Court Administrator's Office, the Oklahoma Supreme Court, and the State Auditor and Inspector.

DISTRICT ATTORNEY

Ray Don Jackson
(D) Woodward

As the chief attorney for county government, the District Attorney acts as the legal advisor to the county officers on matters related to their duties. The District Attorney represents the county in civil litigation. County officials may call upon the District Attorney to clarify a law or request an official interpretation from the Attorney General.

See independent auditor's report.

**ALFALFA COUNTY OFFICIALS
AND RESPONSIBILITIES
FOR THE FISCAL YEAR ENDED JUNE 30, 2005**

ELECTION BOARD SECRETARY

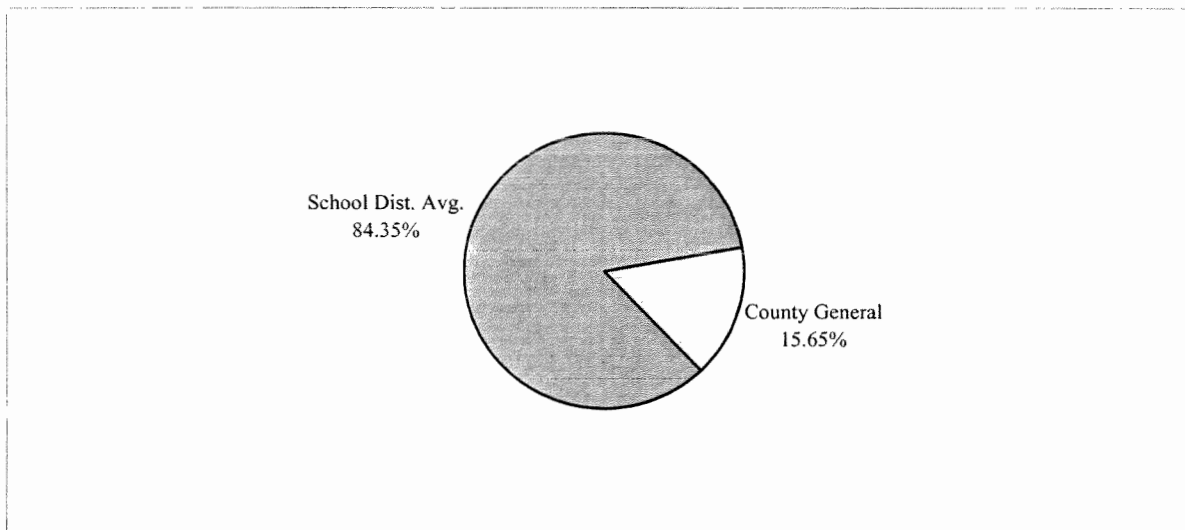
Joyce Thornburgh
(D) Helena

The Election Board Secretary is appointed by the State Election Board and is the chief administrative officer of the County Election Board. The County Election Board has direct responsibility for all the ballots used in all elections within the county. The Board also conducts all elections held within the county.

To finance the operation of the County Election Board, the County Excise Board must appropriate sufficient funds annually. The state and counties split the election costs, but counties must pay for any county elections not held concurrently with state elections.

**ALFALFA COUNTY, OKLAHOMA
AD VALOREM TAX DISTRIBUTION
SHARE OF THE AVERAGE MILLAGE
FOR THE FISCAL YEAR ENDED JUNE 30, 2005**

Property taxes are calculated by applying a millage rate to the assessed valuation of property. Millage rates are established by the Oklahoma Constitution. One mill equals one-thousandth of a dollar. For example, if the assessed value of a property is \$1,000.00 and the millage rate is 1.00, then the tax on that property is \$1.00. This chart shows the different entities of the County and their share of the various millages as authorized by the Constitution.



County-Wide Millages		School District Millages							
Co. General	10.87								
			Gen.	Bldg.	Skg.	Technology Center	Common	Total	
		Byron, Amorita, Burlington	I-1	38.06	5.44			4.35	47.85
		Cherokee	I-46	39.03	5.58	10.74		4.35	59.70
		Helena, Jet, Goltry, Nash	I-93	38.15	5.45	4.94		4.35	52.89
		Ringwood	JT-1	35.28	5.04	23.00	13.65	4.35	81.32
		Carmen/Alva	JT-1	36.58	5.22	5.77	13.65	4.35	65.57
		Aline/Cleo	JT-4	37.06	5.29	3.98	13.65	4.35	64.33
		Wakita	JT-33	35.13	5.02	2.29		4.35	46.79
		Chisholm	JT-42	35.00	5.00	5.99		4.35	50.34

See independent auditor's report.

**ALFALFA COUNTY, OKLAHOMA
COMPUTATION OF LEGAL DEBT MARGIN
FOR THE FISCAL YEAR ENDED JUNE 30, 2005
(UNAUDITED)**

Total net assessed value as of January 1, 2004		<u>\$ 44,311,736</u>
Debt limit - 5% of total assessed value		2,215,587
Total bonds outstanding	-	
Total judgments outstanding	-	
Less cash in sinking fund	<u>-</u>	<u>-</u>
Legal debt margin		<u>\$ 2,215,587</u>

See independent auditor's report.

**ALFALFA COUNTY, OKLAHOMA
RATIO OF NET GENERAL BONDED DEBT TO ASSESSED
VALUE AND NET BONDED DEBT PER CAPITA
FOR THE FISCAL YEAR ENDED JUNE 30, 2005
(UNAUDITED)**

	2005
Estimated population	5,810
Net assessed value as of January 1, 2004	\$ 44,311,736
Gross bonded debt	-
Less available sinking fund cash balance	-
Net bonded debt	\$ -
Ratio of net bonded debt to assessed value	0.00%
Net bonded debt per capita	\$ -

See independent auditor's report.

**ALFALFA COUNTY, OKLAHOMA
 ASSESSED VALUE OF PROPERTY
 FOR THE FISCAL YEAR ENDED JUNE 30, 2005
 (UNAUDITED)**

Valuation Date	Personal	Public Service	Real Estate	Homestead Exemption	Net Value	Estimated Fair Market Value
1/1/2004	\$9,286,175	\$6,575,488	\$29,886,003	\$1,435,930	\$44,311,736	\$333,762,128

See independent auditor's report.

FINANCIAL SECTION



STATE OF OKLAHOMA
OFFICE OF THE AUDITOR AND INSPECTOR

JEFF A. McMAHAN
State Auditor and Inspector

Independent Auditor's Report

TO THE OFFICERS OF
ALFALFA COUNTY, OKLAHOMA

We have audited the combined totals—all funds of the accompanying Combined Statement of Receipts, Disbursements, and Changes in Cash Balances of Alfalfa County, Oklahoma, as of and for the year ended June 30, 2005, listed in the table of contents as the basic financial statement. This financial statement is the responsibility of Alfalfa County's management. Our responsibility is to express an opinion on this financial statement based on our audit.

We conducted our audit in accordance with auditing standards generally accepted in the United States of America and the standards applicable to financial audits contained in *Government Auditing Standards*, issued by the Comptroller General of the United States. Those standards require that we plan and perform the audit to obtain reasonable assurance about whether the financial statement is free of material misstatement. An audit includes examining, on a test basis, evidence supporting the amounts and disclosures in the financial statement. An audit also includes assessing the accounting principles used and significant estimates made by management, as well as evaluating the overall financial statement presentation. We believe that our audit provides a reasonable basis for our opinion. Oklahoma Statutes, in addition to audit responsibilities, assign other responsibilities to the State Auditor and Inspector's Office. Those responsibilities include providing various information technology (IT) support for county government.

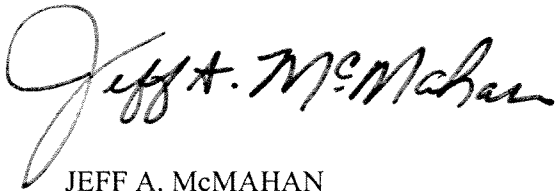
As described in Note 1, this financial statement was prepared using accounting practices prescribed or permitted by Oklahoma state law, which practices differ from accounting principles generally accepted in the United States of America. The effects on the financial statement of the variances between these regulatory accounting practices and accounting principles generally accepted in the United States of America, although not reasonably determinable, are presumed to be material.

In our opinion, because of the matter discussed in the preceding paragraph, the financial statement referred to above does not present fairly, in conformity with accounting principles generally accepted in the United States of America, the financial position of Alfalfa County as of June 30, 2005, or changes in its financial position for the year then ended.

In our opinion, the financial statement referred to above presents fairly, in all material respects, the combined total of receipts, disbursements, and changes in cash of Alfalfa County, for the year ended June 30, 2005, on the basis of accounting described in Note 1.

In accordance with *Government Auditing Standards*, we have also issued our report dated September 11, 2006, on our consideration of Alfalfa County's internal control over financial reporting and on our tests of its compliance with certain provisions of laws, regulations, contracts, and grant agreements and other matters. The purpose of that report is to describe the scope of our testing of internal control over financial reporting and compliance and the results of that testing, and not to provide an opinion on the internal control over financial reporting or on compliance. That report is an integral part of an audit performed in accordance with *Government Auditing Standards* and should be considered in assessing the results of our audit.

Our audit was conducted for the purpose of forming an opinion on the combined total of all funds within the basic financial statement taken as a whole. The combining information is presented for purposes of additional analysis rather than to present the receipts, disbursements, and cash balances of the individual funds. Also, the other supplementary information, as listed in the table of contents, is presented for purposes of additional analysis, and is not a required part of the basic financial statement. Such supplementary information has been subjected to the auditing procedures applied in the audit of the basic financial statement and, in our opinion, is fairly stated, in all material respects, in relation to the basic financial statement taken as a whole. The information listed in the table of contents under Introductory Section has not been audited by us, and accordingly, we express no opinion on it.



JEFF A. McMAHAN
State Auditor and Inspector

September 11, 2006

Basic Financial Statement

**ALFALFA COUNTY, OKLAHOMA
 COMBINED STATEMENT OF RECEIPTS, DISBURSEMENTS, AND
 CHANGES IN CASH BALANCES
 (WITH COMBINING INFORMATION)
 FOR THE FISCAL YEAR ENDED JUNE 30, 2005**

	Beginning Cash Balances July 1, 2004	Receipts Apportioned	Disbursements	Ending Cash Balances June 30, 2005
Combining Information:				
County General	\$ 628,595	\$ 1,166,754	\$ 970,652	\$ 824,697
County Highway	5,052,734	2,343,926	2,372,061	5,024,599
Resale Property	17,499	118,207	18,569	117,137
Sheriff Service Fee	8,468	18,291	21,996	4,763
Sheriff Revolving Fee	77,186	55,942	71,596	61,532
Sheriff Drug Forfeiture	494		494	
Treasurer Mortgage Tax Certification Fee	1,755	1,270	1,262	1,763
County Clerk Lien Fee	7,156	5,125	7,407	4,874
Community Service Sentencing Program	13,311	12,090	823	24,578
County Clerk Records Preservation Fee	5,767			5,767
Assessor Visual Inspection	17,403	1,106	1,545	16,964
Assessor Revolving Fee	1,253	1,091	471	1,873
Insurance Cash Fund	76,958		74,482	2,476
Combined Total--All County Funds	\$ 5,908,579	\$ 3,723,802	\$ 3,541,358	\$ 6,091,023

The notes to the financial statement are an integral part of this statement.

**ALFALFA COUNTY, OKLAHOMA
NOTES TO THE FINANCIAL STATEMENT
FOR THE FISCAL YEAR ENDED JUNE 30, 2005**

1. Summary of Significant Accounting Policies

A. Reporting Entity

Counties were created by the Constitution of Oklahoma. One county officer is appointed; however, most county officers are locally elected by their constituents. All county powers are delegated by the state.

The accompanying basic financial statement presents the receipts, disbursements, and changes in cash balances of the total of all funds of Alfalfa County, Oklahoma. The funds presented as line items are not a part of the basic financial statement, but have been included as supplementary information within the basic financial statement. These separate funds are established by statute, and their operations are under the control of the County officials. The general fund is the County's general operating fund, accounting for all financial resources except those required to be accounted for in another fund. The other funds presented account for financial resources whose use is restricted for specified purposes.

B. Fund Accounting

The County uses funds to report on receipts, disbursements, and changes in cash balances. Fund accounting is designed to demonstrate legal compliance and to aid financial management by segregating transactions related to certain government functions or activities.

Following are descriptions of the funds included as supplementary information within the financial statement:

County General - accounts for the general operations of the government.

County Highway - accounts for state, local and miscellaneous receipts and disbursements are for the purpose of constructing and maintaining county roads and bridges.

Resale Property - accounts for the collection of interest and penalties on delinquent taxes and the disposition of same as restricted by statute.

Sheriff Service Fee - accounts for the collection and disbursement of sheriff process service fees as restricted by statute.

Sheriff Revolving Fee - accounts for the collection of monies from the Oklahoma Department of Corrections and disbursements are for the purpose of maintaining the jail.

Sheriff Drug Forfeiture - accounts for forfeitures of property from drug cases and disbursements are for drug enforcement.

**ALFALFA COUNTY, OKLAHOMA
NOTES TO THE FINANCIAL STATEMENT
FOR THE FISCAL YEAR ENDED JUNE 30, 2005**

Treasurer Mortgage Tax Certification Fee - accounts for the collection of fees by the Treasurer for mortgage tax certificates and the disbursement of the funds as restricted by statute.

County Clerk Lien Fee - accounts for lien collections and disbursements as restricted by statute.

Community Service Sentencing Program - accounts for the collection of funding through the State Department of Corrections for administrative expenses and supervision of offenders.

County Clerk Records Preservation Fee - accounts for fees collected for instruments filed in the Registrar of Deeds as restricted by statute for preservation of records.

Assessor Visual Inspection - accounts for the collection and expenditure of monies by the Assessor as restricted by state statute for the visual inspection program.

Assessor Revolving Fee - accounts for the collection of fees for copies restricted by state statute.

Insurance Cash Fund - accounts for the collection of insurance reimbursements and disbursements are for the repair of damaged properties.

The County Treasurer collects and remits material amounts of intergovernmental revenues and ad valorem tax revenue for other budgetary entities, including emergency medical districts, school districts and cities and towns. The cash receipts and disbursements attributable to those other entities do not appear in funds on the County's financial statement; those funds play no part in the County's operations.

C. Basis of Accounting

The basic financial statement is prepared on a basis of accounting wherein amounts are recognized when received or disbursed. This basis of accounting differs from accounting principles generally accepted in the United States of America, which require revenues to be recognized when they become available and measurable or when they are earned, and expenditures or expenses to be recognized when the related liabilities are incurred. This cash basis financial presentation is not a comprehensive measure of economic condition or changes therein.

D. Budget

Under current Oklahoma Statutes, the general fund is the only fund required to adopt a formal budget. On or before the first Monday in July of each year, each officer or department head submits an estimate of needs to the governing body. The budget is approved by fund, office, or department and object. The County Board of Commissioners may approve changes of

**ALFALFA COUNTY, OKLAHOMA
NOTES TO THE FINANCIAL STATEMENT
FOR THE FISCAL YEAR ENDED JUNE 30, 2005**

appropriations within the fund by office or department and object. To increase or decrease the budget by fund requires approval by the County Excise Board.

For the highway funds and other funds, which are not required to adopt a formal budget, appropriations are made on a monthly basis, according to the funds then available.

E. Cash

The County pools the cash of its various funds in maintaining its bank accounts. However, cash applicable to a particular fund is readily identifiable on the County's books. The balance in the pooled cash accounts is available to meet current operating requirements.

State statutes require financial institutions with which the County maintains funds to deposit collateral securities to secure the County's deposits. The amount of collateral securities to be pledged is established by the County Treasurer; this amount must be at least the amount of the deposit to be secured, less the amount insured (by, for example, the FDIC).

F. Investments

The County Treasurer has been authorized by the County's governing board to make investments. By statute (62 O.S. § 348.1 and § 348.3), the following types of investments are allowed:

- U.S. Government obligations
- Certificates of deposit
- Savings accounts
- G.O. bonds issued by counties, municipalities or school districts
- Money judgments against counties, municipalities or school districts
- Bonds and revenue notes issued by a public trust when the beneficiary of the trust is a county, municipality or school district
- Negotiable certificates of deposit
- Prime bankers acceptance which are eligible for purchase by the Federal Reserve System
- Prime commercial paper with a maturity of 180 days or less
- Repurchase agreements
- Money market funds regulated by the Securities and Exchange Commission and which investments consist of the above-mentioned types of investments

All investments must be backed by the full faith and credit of the United States Government, the Oklahoma State Government, fully collateralized, or fully insured.

**ALFALFA COUNTY, OKLAHOMA
NOTES TO THE FINANCIAL STATEMENT
FOR THE FISCAL YEAR ENDED JUNE 30, 2005**

G. Compensated Absences

The County's policy for leave benefits reads as follows:

Annual Leave - 80 hours of vacation benefits are earned by the employee on their anniversary date of employment. The employees have one full year to use their annual. No balances may be carried over from one year to the next.

Sick Leave - accrues at the rate of 8 hours for each full calendar month worked for the County. Each employee may accumulate up to a maximum of 30 days of sick leave.

2. Ad Valorem Tax

The County's property tax is levied each October 1 on the assessed value listed as of January 1 of the same year for all real and personal property located in the County, except certain exempt property. Assessed values are established by the County Assessor within the prescribed guidelines established by the Oklahoma Tax Commission and the State Equalization Board. Title 68 O.S. § 2820.A. states, ". . . Each assessor shall thereafter maintain an active and systematic program of visual inspection on a continuous basis and shall establish an inspection schedule which will result in the individual visual inspection of all taxable property within the county at least once each four (4) years."

The assessed property value as of January 1, 2004, was approximately \$44,311,736.

Per Article 10, § 8A, with the repeal of personal property tax, the millage with the adjustment factor is 10.87 mills for general fund operations. In addition, the County collects the ad valorem taxes assessed by cities and towns and school districts and remits the ad valorem taxes collected to the appropriate taxing units.

Taxes are due on November 1 following the levy date, although they may be paid in two equal installments. If the first half is paid prior to January 1, the second half is not delinquent until April 1. Unpaid real property taxes become a lien upon said property on October 1 of each year.

Unpaid delinquent personal property taxes are published usually in May. If the taxes are not paid within 30 days from publication, they shall be placed on the personal tax lien docket.

Current year tax collections for the year ended June 30, 2005, were approximately 97.47 percent of the tax levy.

**ALFALFA COUNTY, OKLAHOMA
NOTES TO THE FINANCIAL STATEMENT
FOR THE FISCAL YEAR ENDED JUNE 30, 2005**

3. Fuel Tax

The County receives major funding for roads and highways from a state imposed fuel tax. Taxes are collected by the Oklahoma Tax Commission. Taxes are imposed on all gasoline, diesel, and special fuel sales statewide. The County's share is determined on formulas based on the County population, road miles, and land area and is remitted to the County monthly. These funds are earmarked for roads and highways only and are accounted for in the county highway fund.

4. Risk Management

The County is exposed to the various risks of loss shown in the following table:

Types of Loss	Method of Management	Risk of Loss Retained
General Liability <ul style="list-style-type: none"> • Torts • Errors and Omissions • Law Enforcement Officers Liability • Vehicle 	The County participates in a public entity risk pool: Association of County Commissioners of Oklahoma-Self-Insurance Group. (See ACCO-SIG.)	If claims exceed the authorized deductibles, the County could have to pay its share of any pool deficit. A judgment could be assessed for claims in excess of the pool's limits.
Physical Plant <ul style="list-style-type: none"> • Theft • Damage to Assets • Natural Disasters 		
Workers' Compensation <ul style="list-style-type: none"> • Employees' Injuries 	The County carries commercial insurance.	A judgment could be assessed for claims in excess of coverage.
Employee <ul style="list-style-type: none"> • Medical • Disability • Dental • Life 	The County carries commercial insurance.	None

ACCO-SIG - The pool operates as a common risk management and insurance program and is to be self-sustaining through member premiums. Each participating county chooses a \$10,000, \$25,000, or a \$50,000 deductible amount. The County has chosen a \$10,000 deductible for each insured event as stated in the County's "Certificate of Participation." The risk pool will pay legitimate claims in excess of the deductible amount for replacement value up to \$100,000 for property, and up to \$500,000 for general liability. The pool has acquired commercial reinsurance in the amount of \$1,000,000 to cover claims that exceed the pool's risk retention limits. Settled

**ALFALFA COUNTY, OKLAHOMA
NOTES TO THE FINANCIAL STATEMENT
FOR THE FISCAL YEAR ENDED JUNE 30, 2005**

claims have not exceeded insurance coverage for each of the past three fiscal years. There have been no significant reductions in coverage from the prior fiscal year.

Commercial Insurance - The County obtains commercial insurance coverage to pay legitimate workers' compensation claims and employees' insurance. Settled claims have not exceeded insurance coverage for each of the past three fiscal years. There have been no significant reductions in coverage from the prior fiscal year.

5. Long-term Obligations

Capital Leases

The County acquires road machinery and equipment through lease-purchase agreements financed by the Oklahoma Department of Transportation and/or the equipment vendors or their assignees pursuant to the provisions of 69 O.S. § 636.1 through § 636.7. Lease agreements entered into with the Oklahoma Department of Transportation (ODOT) are interest free. However, starting in January 1997, ODOT began charging a one-time fee of 3% on all pieces of machinery subsequently acquired.

6. Pension Plan

Plan Description. The County contributes to the Oklahoma Public Employees Retirement Plan (the Plan), a cost-sharing, multiple-employer defined benefit pension plan administered by the Oklahoma Public Employees Retirement System (OPERS). Benefit provisions are established and amended by the Oklahoma Legislature. The Plan provides retirement, disability, and death benefits to Plan members and beneficiaries. Title 74, Sections 901 through 943, as amended, establishes the provisions of the Plan. OPERS issues a publicly available financial report that includes financial statements and supplementary information. That report may be obtained by writing OPERS, P.O. Box 53007, Oklahoma City, Oklahoma 73105 or by calling 1-800-733-9008.

Funding Policy. The contribution rates for each member category are established by the Oklahoma Legislature and are based on an actuarial calculation which is performed to determine the adequacy of contribution rates. County employees are required to contribute between 3.5% and 8.5% of earned compensation. The County contributes between 5.0% and 10.0% of earned compensation. Elected officials could contribute between 4.5% and 10% of their entire compensation. The County contributes 10.0% of earned compensation for elected officials. The County's contributions to the Plan for the years ending June 30, 2005, 2004, and 2003 were \$92,391, \$92,441, and \$89,841, respectively, equal to the required contributions for each year.

**ALFALFA COUNTY, OKLAHOMA
NOTES TO THE FINANCIAL STATEMENT
FOR THE FISCAL YEAR ENDED JUNE 30, 2005**

7. Other Post Employment Benefits (OPEB)

In addition to the pension benefits described in the Pension Plan note, OPERS provides post-retirement health care benefits of up to \$105 each for retirees who are members of an eligible group plan. These benefits are funded on a pay-as-you-go basis as part of the overall retirement benefit. OPEB expenditure and participant information is available for the state as a whole; however, information specific to the County is not available nor can it be reasonably estimated.

8. Contingent Liabilities

Amounts received or receivable from grantor agencies are subject to audit and adjustment by grantor agencies, primarily the federal government. Any disallowed claims, including amounts already collected, may constitute a liability of the applicable fund. The amount, if any, of expenditures which may be disallowed by the grantor cannot be determined at this time; although, the County expects such amounts, if any, to be immaterial.

The County is a defendant in various lawsuits. Although the outcome of these lawsuits is not presently determinable, in management's opinion, the resolution of these matters will not have a material adverse effect on the financial condition of the County.

9. Sales Tax

On July 27, 2004, the citizens of Alfalfa County voted on and approved a ½ cent sales tax for the purpose pertaining to the health and well-being of the people, a 3/8 cent sales tax for general operations and improvements of the government and library, and a 3/8 cent sales tax for construction and maintenance of the Alfalfa County fairgrounds. The total sales tax approved was 1¼ cent.

OTHER SUPPLEMENTARY INFORMATION

ALFALFA COUNTY, OKLAHOMA
COMPARATIVE SCHEDULE OF RECEIPTS, EXPENDITURES, AND
CHANGES IN CASH BALANCES—BUDGET AND ACTUAL—BUDGETARY BASIS—
GENERAL FUND
FOR THE FISCAL YEAR ENDED JUNE 30, 2005

	General Fund			
	Original Budget	Final Budget	Actual	Variance
Beginning Cash Balances	\$ 684,548	\$ 684,548	\$ 628,595	\$ (55,953)
Less: Prior Year Outstanding Warrants	(143,527)	(143,527)	(143,527)	
Less: Prior Year Encumbrances	(48,942)	(48,942)	(32,729)	16,213
Beginning Cash Balances, Budgetary Basis	<u>492,079</u>	<u>492,079</u>	<u>452,339</u>	<u>(39,740)</u>
Receipts:				
Ad Valorem Taxes	437,882	437,882	547,291	109,409
Sales Tax	216,000	216,000	299,667	83,667
Charges for Services	33,920	33,920	38,648	4,728
Intergovernmental Revenues	107,035	107,035	119,751	12,716
Miscellaneous Revenues	114,120	159,194	161,397	2,203
Total Receipts, Budgetary Basis	<u>908,957</u>	<u>954,031</u>	<u>1,166,754</u>	<u>212,723</u>
Expenditures:				
District Attorney	5,000	5,000	3,964	1,036
County Sheriff	156,400	157,804	157,791	13
County Treasurer	63,777	63,777	63,336	441
OSU Extension	16,500	16,500	16,386	114
County Clerk	67,127	67,040	67,038	2
Court Clerk	52,762	52,357	47,580	4,777
County Assessor	46,661	47,265	44,244	3,021
Revaluation of Real Property	45,400	45,400	43,045	2,355
General Government	93,725	141,644	141,427	217
Excise-Equalization Board	2,500	2,340	2,340	
County Election Board	37,225	37,443	37,344	99
Insurance	167,600	167,926	167,926	
County Supt. Of Health	1	1		1
Charity	1	1		1

continued on next page

The accompanying notes to the other supplementary information are an integral part of this schedule.
See independent auditor's report.

ALFALFA COUNTY, OKLAHOMA
COMPARATIVE SCHEDULE OF RECEIPTS, EXPENDITURES, AND
CHANGES IN CASH BALANCES—BUDGET AND ACTUAL—BUDGETARY BASIS—
GENERAL FUND
FOR THE FISCAL YEAR ENDED JUNE 30, 2005

continued from previous page

	Original Budget	Final Budget	Actual	Variance
Public Health	1	1		1
Fire Fighting Services	251	251	243	8
County Audit Budget	7,902	7,902	7,902	
Library	6,321	6,353	6,324	29
County Hospital	60,318	54,168	2,190	51,978
Free Fair Budget	7,000	7,000	6,990	10
Sales Tax - Jet Responder	16,097	16,097	595	15,502
Sales Tax - Carmen Responder	15,760	15,760	3,284	12,476
Sales Tax - Aline Responder	15,222	15,222	3,690	11,532
Sales Tax - Cherokee Rescue	15,314	15,314		15,314
Sales Tax - Helena Rescue	16,120	16,120		16,120
Sales Tax - Goltry Rescue	12,781	12,781	543	12,238
Sales Tax - Amorita-Byron Rescue	7,353	7,353	3,319	4,034
Sales Tax - Nescatunga Responder	5,207	9,116	3,139	5,977
Sales Tax - Burlington Responder	10,587	10,587	888	9,699
Sales Tax - Emergency Reserve	157,276	153,367		153,367
Sales Tax - Cherokee Ambulance	36,957	36,957	31,972	4,985
Sales Tax - Helena Ambulance	37,999	38,065	35,904	2,161
Sales Tax - Fairgrounds Improvement	72,450	113,839	39,230	74,609
Sales Tax - Courthouse Improvement	145,441	105,359	14,404	90,955
Total Expenditures, Budgetary Basis	1,401,036	1,446,110	953,038	493,072
Excess of Receipts and Beginning Cash Balances Over Expenditures, Budgetary Basis	<u>\$ -</u>	<u>\$ -</u>	666,055	<u>\$ 666,055</u>
Reconciliation to Statement of Receipts, Disbursements, and Changes in Cash Balances				
Add: Current Year Encumbrances			36,057	
Add: Current Year Outstanding Warrants			122,585	
Ending Cash Balance			<u>\$ 824,697</u>	

The accompanying notes to the other supplementary information are an integral part of this schedule.
See independent auditor's report.

**ALFALFA COUNTY, OKLAHOMA
NOTES TO OTHER SUPPLEMENTARY INFORMATION
FOR THE FISCAL YEAR ENDED JUNE 30, 2005**

Budgetary Schedule

The Comparative Schedule of Receipts, Expenditures, and Changes in Cash Balances—Budget and Actual—Budgetary Basis, for the General Fund presents comparisons of the legally adopted budget with actual data. The "actual" data, as presented in the comparison of budget and actual, will differ from the data as presented in the Combined Statement of Receipts, Disbursements, and Changes in Cash Balances with Combining Information because of adopting certain aspects of the budgetary basis of accounting and the adjusting of encumbrances and outstanding warrants to their related budget year.

Encumbrance accounting, under which purchase orders, contracts, and other commitments for the expenditure of monies are recorded in order to reserve that portion of the applicable appropriation, is employed as an extension of formal budgetary integration in these funds. At the end of the year, unencumbered appropriations lapse.

See independent auditor's report.

INTERNAL CONTROL AND COMPLIANCE SECTION



STATE OF OKLAHOMA
OFFICE OF THE AUDITOR AND INSPECTOR

JEFF A. McMAHAN
State Auditor and Inspector

**Report on Internal Control Over Financial Reporting and on Compliance and Other Matters
Based on an Audit of Financial Statements Performed in Accordance With
*Government Auditing Standards***

TO THE OFFICERS OF
ALFALFA COUNTY, OKLAHOMA

We have audited the combined totals—all funds of the accompanying Combined Statement of Receipts, Disbursements, and Changes in Cash Balances of Alfalfa County, Oklahoma, as of and for the year ended June 30, 2005, which comprises Alfalfa County's basic financial statement, prepared using accounting practices prescribed or permitted by Oklahoma state law, and have issued our report thereon dated September 11, 2006. Our report on the basic financial statement was adverse because the statement is not a presentation in conformity with accounting principles generally accepted in the United States of America. Also, our report describes certain responsibilities of the State Auditor and Inspector's Office other than audit responsibilities. We conducted our audit in accordance with auditing standards generally accepted in the United States of America and the standards applicable to financial audits contained in *Government Auditing Standards*, issued by the Comptroller General of the United States.

Internal Control Over Financial Reporting

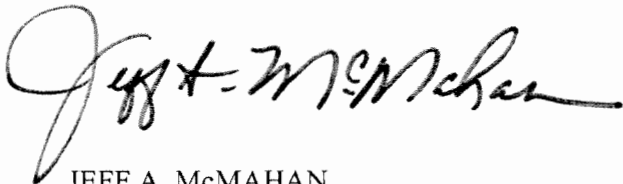
In planning and performing our audit, we considered Alfalfa County's internal control over financial reporting in order to determine our auditing procedures for the purpose of expressing our opinion on the financial statement and not to provide an opinion on the internal control over financial reporting. However, we noted certain matters involving the internal control over financial reporting and its operation that we consider to be reportable conditions. Reportable conditions involve matters coming to our attention relating to significant deficiencies in the design or operation of the internal control over financial reporting that, in our judgment, could adversely affect Alfalfa County's ability to initiate, record, process, and report financial data consistent with the assertions of management in the financial statement. The reportable conditions are described in the accompanying schedule of findings and responses as items 2002-1 and 2003-1.

A material weakness is a reportable condition in which the design or operation of one or more of the internal control components does not reduce to a relatively low level the risk that misstatements caused by error or fraud in amounts that would be material in relation to the financial statement being audited may occur and not be detected within a timely period by employees in the normal course of performing their assigned functions. Our consideration of the internal control over financial reporting would not necessarily disclose all matters in the internal control that might be reportable conditions and, accordingly, would not necessarily disclose all reportable conditions that are also considered to be material weaknesses. However, of the reportable conditions described above, we consider item 2002-1 to be a material weakness.

Compliance and Other Matters

As part of obtaining reasonable assurance about whether Alfalfa County's financial statement is free of material misstatement, we performed tests of its compliance with certain provisions of laws, regulations, contracts, and grant agreements, noncompliance with which could have a direct and material effect on the determination of financial statement amounts. However, providing an opinion on compliance with those provisions was not an objective of our audit, and accordingly, we do not express such an opinion. The results of our tests disclosed no instances of noncompliance or other matters that are required to be reported under *Government Auditing Standards*. However, we noted a certain matter that we reported to the management of Alfalfa County, which is included in Section 2 of the accompanying schedule of findings and responses contained in this report.

This report is intended solely for the information and use of the management of Alfalfa County and should not be used for any other purpose. This report is also a public document pursuant to the Oklahoma Open Records Act (51 O.S., section 24A.1 et seq.), and shall be open to any person for inspection and copying.

A handwritten signature in black ink, reading "Jeff A. McMahan". The signature is written in a cursive style with a large initial "J" and a long horizontal stroke at the end.

JEFF A. McMAHAN
State Auditor and Inspector

September 11, 2006

**ALFALFA COUNTY, OKLAHOMA
SCHEDULE OF FINDINGS AND RESPONSES
FOR THE FISCAL YEAR ENDED JUNE 30, 2005**

SECTION 1 – Findings related to the Report on Internal Control Over Financial Reporting and on Compliance and Other Matters Based on an Audit of Financial Statements Performed in Accordance With *Government Auditing Standards*

Finding 2002-1 - Segregation of Duties (Repeat Finding)

Criteria: Accountability and stewardship are overall goals in evaluating management's accounting for funds. To help ensure a proper accounting of funds, the duties of receiving, receipting, recording, and depositing cash and checks should be segregated.

Condition: One deputy in the County Sheriff's office performs the following tasks:

1. Opens mail and totals remittances
2. Writes official depository receipts
3. Balances the receipts as to cash and checks received
4. Prepares the deposit slip
5. Deposits with the County Treasurer

Effect: This condition could result in unrecorded transactions, misstated financial reports, undetected errors, or misappropriation of assets.

Recommendation: We recommend management be aware of this condition and realize that the concentration of duties and responsibilities in a limited number of individuals is not desirable from a control point of view. Under these conditions, the most effective controls lie in management's knowledge of office operations and periodic review of those operations.

Views of responsible officials and planned corrective actions: A lack of funds requires that the duties of the office be shared by all employees. At this time, measures have been taken to ensure proper accounting of funds by segregating the duties of receiving, receipting, recording, and depositing cash and checks.

Finding 2003-1 - Leave Balances (Repeat Finding)

Criteria: Effective internal controls include updated and accurate documentation of employee's annual, sick, and comp time accrued balances.

Condition: Leave balances were not maintained by some of the County officers and the officers that were maintaining leave balances were doing so in a manner that was inconsistently applied.

Recommendation: We recommend that the County officers implement policies and procedures to maintain updated and accurate leave balance records for all employees. We further recommend the County officers adopt a standardized form that is consistently applied in accordance with policy and procedures.

**ALFALFA COUNTY, OKLAHOMA
SCHEDULE OF FINDINGS AND RESPONSES
FOR THE FISCAL YEAR ENDED JUNE 30, 2005**

Views of responsible officials and planned corrective actions: The County officers will develop and implement a standardized form that documents annual, sick, and comp time balances on a basis consistent with policy and procedures for each employee.

SECTION 2 – This section contains certain matters not required to be reported in accordance with *Government Auditing Standards*. However, we believe these matters are significant enough to bring to management’s attention. We recommend that management consider these matters and take appropriate corrective action.

Finding 2003-2 - Fixed Assets Inventory (Repeat Finding)

Criteria: Title 19 O.S. § 178.3 states, “The county clerk shall be custodian and repository of all inventory records, files and reports.

Condition: The County’s inventory lists were not maintained on a current basis and were not accurate.

Recommendation: We recommend the County implement policies and procedures to comply with 19 O.S. § 178.3 and that the records, files and reports be accurately updated and maintained.

Views of responsible officials and planned corrective actions: The County Clerk is in the process of updating inventory records.