

**CIMARRON COUNTY, OKLAHOMA  
FINANCIAL STATEMENT  
AND INDEPENDENT AUDITOR'S REPORT  
FOR THE FISCAL YEAR ENDED JUNE 30, 2005**

---

This publication is printed and issued by the State Auditor and Inspector as authorized by 19 O.S. § 171. Pursuant to 74 O.S. § 3105, 35 copies have been prepared and distributed at a cost of \$91.58. Copies have been deposited with the Publications Clearinghouse of the Oklahoma Department of Libraries.



STATE OF OKLAHOMA  
OFFICE OF THE AUDITOR AND INSPECTOR

JEFF A. McMAHAN  
State Auditor and Inspector

November 16, 2006

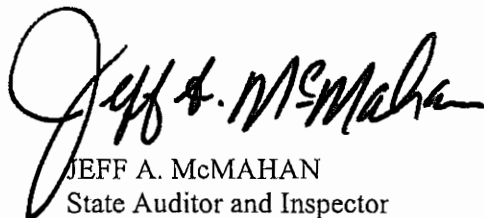
TO THE CITIZENS OF  
CIMARRON COUNTY, OKLAHOMA

Transmitted herewith is the audit of Cimarron County, Oklahoma, for the fiscal year ended June 30, 2005. A report of this type is critical in nature; however, we do not intend to imply that our audit failed to disclose commendable features in the present accounting and operating procedures of the County.

We wish to take this opportunity to express our appreciation for the assistance and cooperation extended to our office during the course of our audit.

The Office of the State Auditor and Inspector is committed to serving the public interest by providing independent oversight and by issuing reports that serve as a management tool to the state to ensure a government which is accountable to the people of the State of Oklahoma.

Sincerely,

  
JEFF A. McMAHAN  
State Auditor and Inspector

CIMARRON COUNTY, OKLAHOMA  
FINANCIAL STATEMENT  
FOR THE FISCAL YEAR ENDED JUNE 30, 2005

---

**TABLE OF CONTENTS**

INTRODUCTORY SECTION (Unaudited)

Report to the Citizens of Cimarron County.....	ii
County Officials and Responsibilities.....	iii
Ad Valorem Tax Distribution.....	viii
Computation of Legal Debt Margin.....	ix
Ratio of Net General Bonded Debt to Assessed Value and Net Bonded Debt Per Capita.....	x
Assessed Value of Property.....	xi

FINANCIAL SECTION

Report of State Auditor and Inspector.....	1
Basic Financial Statement:	
Combined Statement of Receipts, Disbursements, and Changes in Cash Balances (with Combining Information).....	3
Notes to the Financial Statement.....	4

OTHER SUPPLEMENTARY INFORMATION

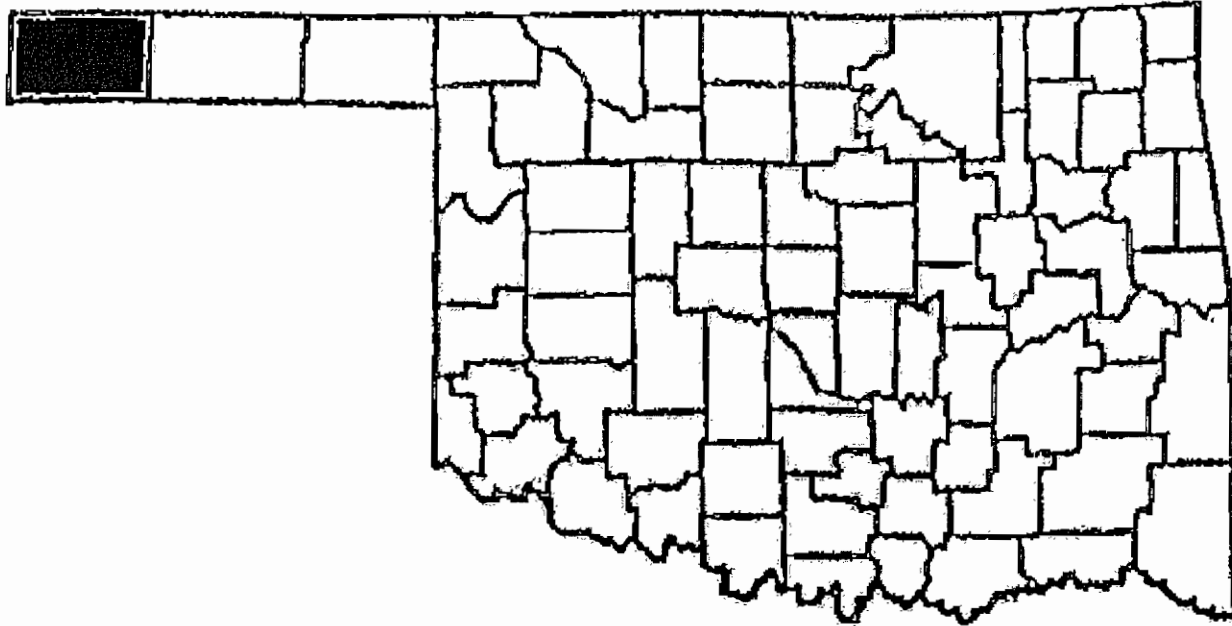
Comparative Schedule of Receipts, Expenditures, and Changes in Cash Balances—Budget and Actual—Budgetary Basis—General Fund.....	13
Detailed Schedule of Receipts, Disbursements, and Changes in Cash Balances—Sinking Fund.....	15
Notes to Other Supplementary Information.....	16

INTERNAL CONTROL AND COMPLIANCE SECTION

Report on Internal Control Over Financial Reporting and on Compliance and Other Matters Based on an Audit of Financial Statements Performed in Accordance With <i>Government Auditing Standards</i> .....	17
Schedule of Findings and Responses.....	19

REPORT TO THE CITIZENS  
OF  
CIMARRON COUNTY, OKLAHOMA

---



Cimarron County was formed at statehood and named for the Cimarron River. The name Cimarron is a Mexican-Apache word meaning “wanderer.”

For many years, present-day Cimarron County was a part of “No Man’s Land,” an area populated with few settlers and regulated by virtually no law. Sheep and cattle ranchers entered this area long before it was opened to homesteaders, and today, farming and ranching constitute the economic base of the county.

In 1943, Boise City, the county seat, was accidentally bombed by U.S. servicemen from Dalhart Army Base. Cimarron County is also the site of Black Mesa, the highest point in Oklahoma.

County Seat – Boise City

Area – 1,841.17 Square Miles

County Population – 2,897  
(2004 est.)

Farms - 545

Land in Farms – 1,121,690 Acres

Primary Source: Oklahoma Almanac 2005-2006

See independent auditor’s report.

**CIMARRON COUNTY OFFICIALS  
AND RESPONSIBILITIES  
FOR THE FISCAL YEAR ENDED JUNE 30, 2005**

---

**COUNTY ASSESSOR**

Patricia Hiner  
(R) Boise City

The County Assessor has the responsibility to appraise and assess the real and personal property within the county for the purpose of ad valorem taxation. Also, the County Assessor is required to compute the ad valorem taxes due on all taxable property. The County Assessor appraises all the taxable real and personal property according to its fair cash value for which the property is actually being used as of January 1 of the taxable year at the percentages provided for in Article 10, § 8 of the Oklahoma Constitution.

The County Assessor is required to build and maintain permanent records of the taxable real property and tax exempt real property within the county. Information entered on each record includes the property's legal description, owner's name and address, and the homestead exemption status of the owner.

**COUNTY CLERK**

Coleen Crabtree  
(D) Boise City

The County Clerk serves as the register of deeds and custodian of records for the county. The County Clerk also serves as the secretary to several boards, including the Board of County Commissioners, the County Excise Board, the County Board of Equalization, and the Board of Tax Roll Corrections.

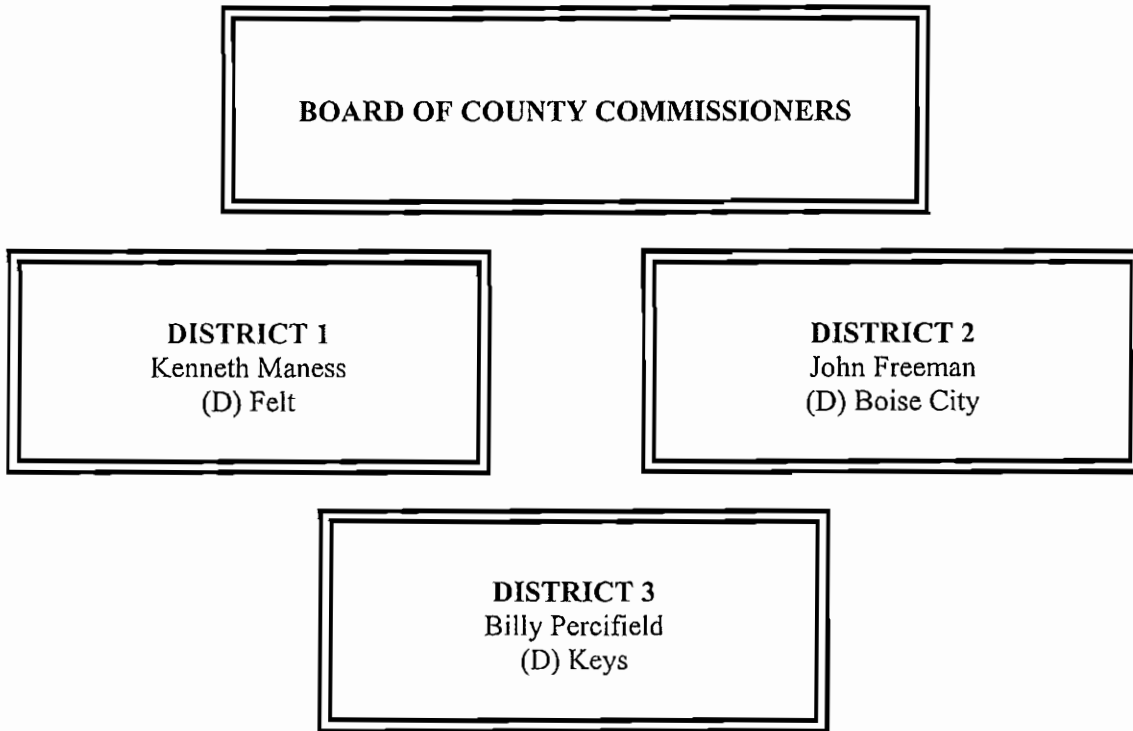
The County Clerk reviews all the claims for payment of goods and services purchased or contracted by the county, and prepares the proper warrants for payment of those goods and services and the county payroll. The County Clerk, or his or her designated deputy, serves as the purchasing agent for the county. This system is a means to ensure the public that tax dollars are being spent appropriately.

Various records within the different county offices are classified as "open records." As such, they can be reviewed and mechanically copied by the public.

See independent auditor's report.

**CIMARRON COUNTY OFFICIALS  
AND RESPONSIBILITIES  
FOR THE FISCAL YEAR ENDED JUNE 30, 2005**

---



The Board of County Commissioners is the chief administrative body for the county. County Commissioners are also responsible for maintaining and constructing the county roads and bridges.

The Commissioners must act as a Board when entering into contracts or other agreements affecting the county's welfare. Thus, actions taken by the Board are voted on and approved by a majority of the Commissioners. The Board of County Commissioners' business meetings are open to the public.

As the county's chief administrative body, the three County Commissioners must make major financial decisions and transactions. The Board has the official duty to ensure the fiscal responsibility of the other county officers who handle county funds. The review and approval procedures empowered to the Board of County Commissioners are a means to provide the public with a fiscally efficient system of county government.

See independent auditor's report.

**CIMARRON COUNTY OFFICIALS  
AND RESPONSIBILITIES  
FOR THE FISCAL YEAR ENDED JUNE 30, 2005**

---

**COUNTY SHERIFF**

Keith Borth  
(I) Boise City

The County Sheriff is responsible for preserving the peace and protecting life and property within the county's jurisdiction. As the county's chief law enforcement officer, the Sheriff has the power and authority to suppress all unlawful disturbances, to apprehend and secure persons charged with felony or breach of peace, and to operate the county jail.

The County Sheriff has the responsibility of serving warrants and processing papers ordered by the District Court.

**COUNTY TREASURER**

Gayla James  
(R) Boise City

All collections by county government from ad valorem taxes and other sources are deposited with the County Treasurer. The County Treasurer collects ad valorem taxes for the county and its political subdivisions. The County Treasurer is authorized to issue delinquent personal property tax warrants and to impose tax liens on real property for delinquent taxes.

To account for county collections and disbursements, the County Treasurer is required to maintain an accurate record of all the monies received and disbursed. The State Auditor and Inspector's Office prescribes all the forms used by the County Treasurer, and at least twice a year inspects the County Treasurer's accounts.

See independent auditor's report.

**CIMARRON COUNTY OFFICIALS  
AND RESPONSIBILITIES  
FOR THE FISCAL YEAR ENDED JUNE 30, 2005**

---

**COURT CLERK**  
Pricilla Johnson  
(R) Boise City

The Court Clerk has the primary responsibility to record, file, and maintain as permanent records the proceedings of the District Court.

Court proceedings are recorded in the appropriate journal or record docket. All the court proceedings are public information except those related to juvenile, guardianship, adoption, and mental health cases.

The Court Clerk issues marriage licenses, passports, notary certificates, beer and pool hall licenses, and private process server licenses.

Monies from the court fund are identified for distribution by the Court Clerk to the appropriate units of county and state government. Court Clerks use forms and follow procedures prescribed by the Court Administrator's Office, the Oklahoma Supreme Court, and the State Auditor and Inspector.

**DISTRICT ATTORNEY**  
James M. Boring  
(R) Guymon

As the chief attorney for county government, the District Attorney acts as the legal advisor to the county officers on matters related to their duties. The District Attorney represents the county in civil litigation. County officials may call upon the District Attorney to clarify a law or request an official interpretation from the Attorney General.

See independent auditor's report.



**CIMARRON COUNTY OFFICIALS  
AND RESPONSIBILITIES  
FOR THE FISCAL YEAR ENDED JUNE 30, 2005**

---

**ELECTION BOARD SECRETARY**

Vicki Turner  
(D) Boise City

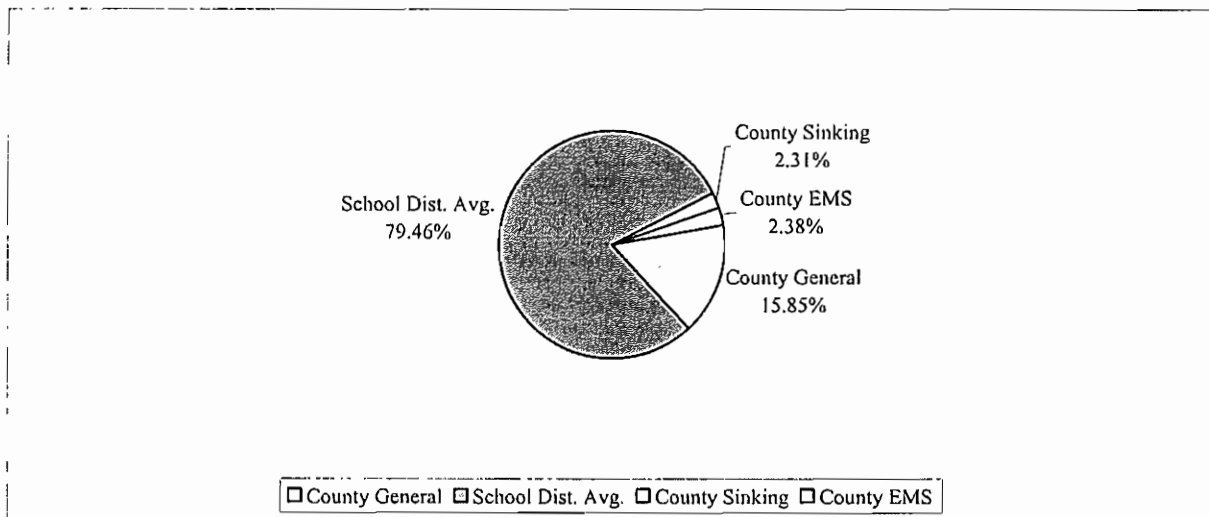
The Election Board Secretary is appointed by the State Election Board and is the chief administrative officer of the County Election Board. The County Election Board has direct responsibility for all the ballots used in all elections within the county. The Board also conducts all elections held within the county.

To finance the operation of the County Election Board, the County Excise Board must appropriate sufficient funds annually. The state and counties split the election costs, but counties must pay for any county elections not held concurrently with state elections.

See independent auditor's report.

**CIMARRON COUNTY, OKLAHOMA  
AD VALOREM TAX DISTRIBUTION  
SHARE OF THE AVERAGE MILLAGE  
FOR THE FISCAL YEAR ENDED JUNE 30, 2005**

Property taxes are calculated by applying a millage rate to the assessed valuation of property. Millage rates are established by the Oklahoma Constitution. One mill equals one-thousandth of a dollar. For example, if the assessed value of a property is \$1,000.00 and the millage rate is 1.00, then the tax on that property is \$1.00. This chart shows the different entities of the County and their share of the various millages as authorized by the Constitution.



County-Wide Millages		School District Millages						
Co. General	10.00							
County Sinking	1.46	Boise City- City	I-2	35.00	5.00	3.69	4.00	47.69
County EMS	1.50	Keyes-City	I-11	35.00	5.00	17.46	4.00	61.46
		Texas County	JT-1	35.00	5.00	9.46	4.00	53.46
		Plainview	C-1	35.00	5.00		4.00	44.00
		Felt	I-10	35.00	5.00		4.00	44.00

See independent auditor's report.

**CIMARRON COUNTY, OKLAHOMA  
COMPUTATION OF LEGAL DEBT MARGIN  
FOR THE FISCAL YEAR ENDED JUNE 30, 2005  
(UNAUDITED)**

---

---

Total net assessed value as of January 1, 2004		<u>\$ 39,439,573</u>
Debt limit - 5% of total assessed value		1,971,979
Total bonds outstanding	60,000	
Total judgments outstanding	50,000	
Less cash in sinking fund	<u>(25,094)</u>	<u>84,906</u>
Legal debt margin		<u>\$ 1,887,073</u>

See independent auditor's report.

**CIMARRON COUNTY, OKLAHOMA  
RATIO OF NET GENERAL BONDED DEBT TO ASSESSED  
VALUE AND NET BONDED DEBT PER CAPITA  
FOR THE FISCAL YEAR ENDED JUNE 30, 2005  
(UNAUDITED)**

---

	2005
Estimated population	2,897
Net assessed value as of January 1, 2004	\$ 39,439,573
Gross bonded debt	60,000
Less available sinking fund cash balance	(25,094)
Net bonded debt	\$ 34,906
Ratio of net bonded debt to assessed value	0.09%
Net bonded debt per capita	\$ 12.05

See independent auditor's report.

**CIMARRON COUNTY, OKLAHOMA  
ASSESSED VALUE OF PROPERTY  
FOR THE FISCAL YEAR ENDED JUNE 30, 2005  
(UNAUDITED)**

---

<u>Valuation Date</u>	<u>Personal</u>	<u>Public Service</u>	<u>Real Estate</u>	<u>Homestead Exemption</u>	<u>Net Value</u>	<u>Estimated Fair Market Value</u>
1/1/2004	\$11,098,910	\$10,793,612	\$18,264,221	\$717,170	\$39,439,573	\$267,590,361

See independent auditor's report.

**FINANCIAL SECTION**



STATE OF OKLAHOMA  
OFFICE OF THE AUDITOR AND INSPECTOR

JEFF A. McMAHAN  
State Auditor and Inspector

**Independent Auditor's Report**

TO THE OFFICERS OF  
CIMARRON COUNTY, OKLAHOMA

We have audited the combined totals—all funds of the accompanying Combined Statement of Receipts, Disbursements, and Changes in Cash Balances of Cimarron County, Oklahoma, as of and for the year ended June 30, 2005, listed in the table of contents as the basic financial statement. This financial statement is the responsibility of Cimarron County's management. Our responsibility is to express an opinion on this financial statement based on our audit.

We conducted our audit in accordance with auditing standards generally accepted in the United States of America and the standards applicable to financial audits contained in *Government Auditing Standards*, issued by the Comptroller General of the United States. Those standards require that we plan and perform the audit to obtain reasonable assurance about whether the financial statement is free of material misstatement. An audit includes examining, on a test basis, evidence supporting the amounts and disclosures in the financial statement. An audit also includes assessing the accounting principles used and significant estimates made by management, as well as evaluating the overall financial statement presentation. We believe that our audit provides a reasonable basis for our opinion. Oklahoma Statutes, in addition to audit responsibilities, assign other responsibilities to the State Auditor and Inspector's Office. Those responsibilities include providing various information technology (IT) support for county government.

As described in Note 1, this financial statement was prepared using accounting practices prescribed or permitted by Oklahoma state law, which practices differ from accounting principles generally accepted in the United States of America. The effects on the financial statement of the variances between these regulatory accounting practices and accounting principles generally accepted in the United States of America, although not reasonably determinable, are presumed to be material.

In our opinion, because of the matter discussed in the preceding paragraph, the financial statement referred to above does not present fairly, in conformity with accounting principles generally accepted in the United States of America, the financial position of Cimarron County as of June 30, 2005, or changes in its financial position for the year then ended.

In our opinion, the financial statement referred to above presents fairly, in all material respects, the combined total of receipts, disbursements, and changes in cash of Cimarron County, for the year ended June 30, 2005, on the basis of accounting described in Note 1.

In accordance with *Government Auditing Standards*, we have also issued our report dated November 6, 2006, on our consideration of Cimarron County's internal control over financial reporting and on our tests of its compliance with certain provisions of laws, regulations, contracts, and grant agreements and other matters. The purpose of that report is to describe the scope of our testing of internal control over financial reporting and compliance and the results of that testing, and not to provide an opinion on the internal control over financial reporting or on compliance. That report is an integral part of an audit performed in accordance with *Government Auditing Standards* and should be considered in assessing the results of our audit.

Our audit was conducted for the purpose of forming an opinion on the combined total of all funds within the basic financial statement taken as a whole. The combining information is presented for purposes of additional analysis rather than to present the receipts, disbursements, and cash balances of the individual funds. Also, the other supplementary information, as listed in the table of contents, is presented for purposes of additional analysis, and is not a required part of the basic financial statement. Such supplementary information has been subjected to the auditing procedures applied in the audit of the basic financial statement and, in our opinion, is fairly stated, in all material respects, in relation to the basic financial statement taken as a whole. The information listed in the table of contents under Introductory Section has not been audited by us, and accordingly, we express no opinion on it.

A handwritten signature in black ink that reads "Jeff A. McMAHAN". The signature is written in a cursive, flowing style with a large initial "J".

JEFF A. McMAHAN  
State Auditor and Inspector

November 6, 2006



## **Basic Financial Statement**

**CIMARRON COUNTY, OKLAHOMA  
 COMBINED STATEMENT OF RECEIPTS, DISBURSEMENTS, AND  
 CHANGES IN CASH BALANCES  
 (WITH COMBINING INFORMATION)  
 FOR THE FISCAL YEAR ENDED JUNE 30, 2005**

	Beginning Cash Balances July 1, 2004	Receipts Apportioned	Disbursements	Ending Cash Balances June 30, 2005
Combining Information:				
County General	\$ 323,413	\$ 639,873	\$ 712,675	\$ 250,611
County Highway	2,940,501	2,888,143	2,652,029	3,176,615
Hospital Sales Tax	3,271	290,145	262,552	30,864
Resale Property	21,151	7,090	15,496	12,745
Treasurer Mortgage Tax Certification Fee	3,868	490	40	4,318
County Clerk Lien Fee	6,418	6,336	5,539	7,215
Sheriff Service Fee	66,108	30,390	35,790	60,708
Assessor Revolving Fee	998	1,441	785	1,654
County Clerk Records Preservation Fee	12,530	9,655	9,176	13,009
CDBG Grant		111,191	111,191	
REAP Grant		12,000	12,000	
Hazard Mitigation		10,000	10,000	
Series A Sinking	57,270	56,207	88,383	25,094
<b>Combined Total—All County Funds</b>	<b>\$ 3,435,528</b>	<b>\$ 4,062,961</b>	<b>\$ 3,915,656</b>	<b>\$ 3,582,833</b>

The notes to the financial statement are an integral part of this statement.

**CIMARRON COUNTY, OKLAHOMA  
NOTES TO THE FINANCIAL STATEMENT  
FOR THE FISCAL YEAR ENDED JUNE 30, 2005**

---

**1. Summary of Significant Accounting Policies**

**A. Reporting Entity**

Counties were created by the Constitution of Oklahoma. One county officer is appointed; however, most county officers are locally elected by their constituents. All county powers are delegated by the state.

The accompanying basic financial statement presents the receipts, disbursements, and changes in cash balances of the total of all funds of Cimarron County, Oklahoma. The funds presented as line items are not a part of the basic financial statement, but have been included as supplementary information within the basic financial statement. These separate funds are established by statute, and their operations are under the control of the County officials. The general fund is the County's general operating fund, accounting for all financial resources except those required to be accounted for in another fund. The other funds presented account for financial resources whose use is restricted for specified purposes.

**B. Fund Accounting**

The County uses funds to report on receipts, disbursements, and changes in cash balances. Fund accounting is designed to demonstrate legal compliance and to aid financial management by segregating transactions related to certain government functions or activities.

Following are descriptions of the funds included as supplementary information within the financial statement:

County General - accounts for the general operations of the government.

County Highway - accounts for state, local and miscellaneous receipts and disbursements are for the purpose of constructing and maintaining county roads and bridges.

Hospital Sales Tax - accounts for the collections of sales tax and the disbursement is for the purpose of operations of the hospital.

Resale Property - accounts for the collection of interest and penalties on delinquent taxes and the disposition of same as restricted by statute.

Treasurer Mortgage Tax Certification Fee - accounts for the collection of fees by the Treasurer for mortgage tax certificates and the disbursement of the funds as restricted by statute.

County Clerk Lien Fee - accounts for lien collections and disbursements as restricted by statute.

**CIMARRON COUNTY, OKLAHOMA  
NOTES TO THE FINANCIAL STATEMENT  
FOR THE FISCAL YEAR ENDED JUNE 30, 2005**

---

Sheriff Service Fee - accounts for the collection and disbursement of sheriff process service fees as restricted by statute.

Assessor Revolving Fee - accounts for the collection of fees for copies restricted by state statute.

County Clerk Records Preservation Fee - accounts for fees collected for instruments filed in the Registrar of Deeds as restricted by statute for preservation of records.

CDBG Grant - accounts for the federal grant funds received for the construction of the Kenton Senior Citizens building and for road improvements to the Kenton cemetery.

REAP Grant - accounts for state grant funds received to help supplement the building of the Kenton Senior Citizens building.

Hazard Mitigation - accounts for grant funds received from the Federal Emergency Management Agency. Disbursements are made to individuals for safe room projects.

Series A Sinking - accounts for the payment of interest and principal on the matured portion of long-term bonded debt. Debt service receipts are derived generally from a special ad valorem tax levy and from interest earned on investments of cash not immediately required for debt service payments.

The County Treasurer collects and remits material amounts of intergovernmental revenues and ad valorem tax revenue for other budgetary entities, including emergency medical districts, school districts and cities and towns. The cash receipts and disbursements attributable to those other entities do not appear in funds on the County's financial statement; those funds play no part in the County's operations.

**C. Basis of Accounting**

The basic financial statement is prepared on a basis of accounting wherein amounts are recognized when received or disbursed. This basis of accounting differs from accounting principles generally accepted in the United States of America, which require revenues to be recognized when they become available and measurable or when they are earned, and expenditures or expenses to be recognized when the related liabilities are incurred. This cash basis financial presentation is not a comprehensive measure of economic condition or changes therein.

**D. Budget**

Under current Oklahoma Statutes, the general fund is the only fund required to adopt a formal budget. On or before the first Monday in July of each year, each officer or department head submits an estimate of needs to the governing body. The budget is approved by fund, office, or

**CIMARRON COUNTY, OKLAHOMA  
NOTES TO THE FINANCIAL STATEMENT  
FOR THE FISCAL YEAR ENDED JUNE 30, 2005**

---

department and object. The County Board of Commissioners may approve changes of appropriations within the fund by office or department and object. To increase or decrease the budget by fund requires approval by the County Excise Board.

For the highway funds and other funds, which are not required to adopt a formal budget, appropriations are made on a monthly basis, according to the funds then available.

**E. Cash**

The County pools the cash of its various funds in maintaining its bank accounts. However, cash applicable to a particular fund is readily identifiable on the County's books. The balance in the pooled cash accounts is available to meet current operating requirements.

State statutes require financial institutions with which the County maintains funds to deposit collateral securities to secure the County's deposits. The amount of collateral securities to be pledged is established by the County Treasurer; this amount must be at least the amount of the deposit to be secured, less the amount insured (by, for example, the FDIC).

**F. Investments**

The County Treasurer has been authorized by the County's governing board to make investments. By statute (62 O.S. § 348.1 and § 348.3), the following types of investments are allowed:

- U.S. Government obligations
- Certificates of deposit
- Savings accounts
- G.O. bonds issued by counties, municipalities or school districts
- Money judgments against counties, municipalities or school districts
- Bonds and revenue notes issued by a public trust when the beneficiary of the trust is a county, municipality or school district
- Negotiable certificates of deposit
- Prime bankers acceptance which are eligible for purchase by the Federal Reserve System
- Prime commercial paper with a maturity of 180 days or less
- Repurchase agreements
- Money market funds regulated by the Securities and Exchange Commission and which investments consist of the above-mentioned types of investments

All investments must be backed by the full faith and credit of the United States Government, the Oklahoma State Government, fully collateralized, or fully insured.

**CIMARRON COUNTY, OKLAHOMA  
NOTES TO THE FINANCIAL STATEMENT  
FOR THE FISCAL YEAR ENDED JUNE 30, 2005**

---

**G. Compensated Absences**

All full-time employees are entitled to annual leave that is accrued on a monthly basis after one year of service. Employees can earn from one week of vacation up to four weeks of vacation depending on the number of years of service. Employees may not carry over vacation time from one year to the next based on the employee's anniversary date of employment.

Sick leave shall accumulate at the rate of 1 day for each calendar month of service to the County. Sick leave may be accrued up to a maximum of 960 hours. When terminating employment with the County, an employee may not collect pay for the accrued sick leave.

**2. Ad Valorem Tax**

The County's property tax is levied each October 1 on the assessed value listed as of January 1 of the same year for all real and personal property located in the County, except certain exempt property. Assessed values are established by the County Assessor within the prescribed guidelines established by the Oklahoma Tax Commission and the State Equalization Board. Title 68 O.S. § 2820.A. states, ". . . Each assessor shall thereafter maintain an active and systematic program of visual inspection on a continuous basis and shall establish an inspection schedule which will result in the individual visual inspection of all taxable property within the county at least once each four (4) years."

The assessed property value as of January 1, 2004, was approximately \$39,439,573.

The County levied 10.00 mills for general fund operations, 1.5 mills for emergency medical service, and 1.46 mills for counting sinking. In addition, the County collects the ad valorem taxes assessed by cities and towns and school districts and remits the ad valorem taxes collected to the appropriate taxing units.

Taxes are due on November 1 following the levy date, although they may be paid in two equal installments. If the first half is paid prior to January 1, the second half is not delinquent until April 1. Unpaid real property taxes become a lien upon said property on October 1 of each year.

Unpaid delinquent personal property taxes are published usually in May. If the taxes are not paid within 30 days from publication, they shall be placed on the personal tax lien docket.

Current year tax collections for the year ended June 30, 2005, were approximately 98.81 percent of the tax levy.

**CIMARRON COUNTY, OKLAHOMA  
NOTES TO THE FINANCIAL STATEMENT  
FOR THE FISCAL YEAR ENDED JUNE 30, 2005**

---

**3. Fuel Tax**

The County receives major funding for roads and highways from a state imposed fuel tax. Taxes are collected by the Oklahoma Tax Commission. Taxes are imposed on all gasoline, diesel, and special fuel sales statewide. The County's share is determined on formulas based on the County population, road miles, and land area and is remitted to the County monthly. These funds are earmarked for roads and highways only and are accounted for in the county highway fund.

**4. Risk Management**

The County is exposed to the various risks of loss shown in the following table:

Types of Loss	Method of Management	Risk of Loss Retained
General Liability <ul style="list-style-type: none"> <li>• Torts</li> <li>• Errors and Omissions</li> <li>• Law Enforcement Officers Liability</li> <li>• Vehicle</li> </ul>	The County participates in a public entity risk pool: Association of County Commissioners of Oklahoma-Self-Insurance Group. (See ACCO-SIG.)	If claims exceed the authorized deductibles, the County could have to pay its share of any pool deficit. A judgment could be assessed for claims in excess of the pool's limits.
Physical Plant <ul style="list-style-type: none"> <li>• Theft</li> <li>• Damage to Assets</li> <li>• Natural Disasters</li> </ul>		
Workers' Compensation <ul style="list-style-type: none"> <li>• Employees' Injuries</li> </ul>	The County carries commercial insurance.	A judgment could be assessed for claims in excess of coverage.
Employee <ul style="list-style-type: none"> <li>• Medical</li> <li>• Disability</li> <li>• Dental</li> <li>• Life</li> </ul>	The County participates in the Oklahoma Public Employees Health and Welfare Plan. (See OPEH&WP.)	If claims exceed pool assets, the members would have surcharges assessed to pay the excess claims.

ACCO-SIG - The pool operates as a common risk management and insurance program and is to be self-sustaining through member premiums. Each participating county chooses a \$10,000, \$25,000, or a \$50,000 deductible amount. The County has chosen a \$10,000 deductible for each insured event as stated in the County's "Certificate of Participation." The risk pool will pay legitimate claims in excess of the deductible amount for replacement value up to \$100,000 for property, and up to \$500,000 for general liability. The pool has acquired commercial reinsurance in the amount of \$1,000,000 to cover claims that exceed the pool's risk retention limits. Settled

**CIMARRON COUNTY, OKLAHOMA  
NOTES TO THE FINANCIAL STATEMENT  
FOR THE FISCAL YEAR ENDED JUNE 30, 2005**

---

claims have not exceeded insurance coverage for each of the past three fiscal years. There have been no significant reductions in coverage from the prior fiscal year.

Commercial Insurance - The County obtains commercial insurance coverage to pay legitimate workers' compensation claims. Settled claims have not exceeded insurance coverage for each of the past three fiscal years. There have been no significant reductions in coverage from the prior fiscal year.

OPEH&WP - The County has entered into an interlocal agreement with other governmental entities to participate in a pooled self-insurance fund to provide insurance coverage. The pool provides for surcharges to be assessed for claims in excess of pool assets to offset pool deficits. Settled claims have not exceeded insurance coverage for each of the past three fiscal years. There have been no significant reductions in coverage from the prior fiscal year.

**5. Long-term Obligations**

**Capital Leases**

The County acquires road machinery and equipment through lease-purchase agreements financed by the Oklahoma Department of Transportation and/or the equipment vendors or their assignees pursuant to the provisions of 69 O.S. § 636.1 through § 636.7. Lease agreements entered into with the Oklahoma Department of Transportation (ODOT) are interest free. However, starting in January 1997, ODOT began charging a one-time fee of 3% on all pieces of machinery subsequently acquired.

**Judgments**

The County has judgments which are being retired by a .83 levy in the sinking fund. The County is obligated to pay these judgments over a three year period.

<u>Case Number</u>	<u>Original Judgment</u>
CJ-2002-23	\$75,000

During the year ended June 30, 2005, the County paid \$25,000 principal and \$6,058 interest on this judgment. The County has \$50,000 in an outstanding balance on the judgment at June 30, 2005. For the ad valorem tax year ending June 30, 2005, a .83 mill levy was collected by the taxpayers of Cimarron County.

**General Obligation Bonds**

The government issues general obligation bonds to provide funds for the acquisition and construction of major capital facilities.



**CIMARRON COUNTY, OKLAHOMA  
NOTES TO THE FINANCIAL STATEMENT  
FOR THE FISCAL YEAR ENDED JUNE 30, 2005**

Cimarron County Industrial Development General Obligation Bonds Series A 1978 - These bonds were issued January 10, 1978, in the amount of \$660,000 to the Chase Manhattan Bank (National Association) New York, New York. This General Obligation Bond Series A 1978 was to provide part of the funds for the purpose of securing and developing industry within Cimarron County. For the ad valorem tax year of 2004, fiscal year ending June 30, 2005, a .63 mill levy was collected by the taxpayers of Cimarron County.

The first principal payment of the General Obligation Bonds Series A 1978 was due January 1, 1982, and continues annually on January 1 until the final maturity date of January 1, 2008.

General obligation bonds are direct obligations and pledge the full faith and credit of the government. These bonds are required to be fully paid within 25 years from the date of issue. General obligation bonds currently outstanding are as follows:

Purpose	Interest Rates	Amount
Cimarron County Industrial Development General Obligation Bonds Series A 1978	5 to 5.25%	\$60,000

Annual debt service requirements to maturity for general obligation bonds, including interest of \$4,853, are as follows:

Fiscal Year Ending June 30,	Principal	Interest	Total
2006	\$ 20,000	\$ 1,876	\$ 21,876
2007	20,000	1,632	21,632
2008	20,000	1,345	21,345
Total	\$ 60,000	\$ 4,853	\$ 64,853

**6. Pension Plan**

Plan Description. The County contributes to the Oklahoma Public Employees Retirement Plan (the Plan), a cost-sharing, multiple-employer defined benefit pension plan administered by the Oklahoma Public Employees Retirement System (OPERS). Benefit provisions are established and amended by the Oklahoma Legislature. The Plan provides retirement, disability, and death benefits to Plan members and beneficiaries. Title 74, Sections 901 through 943, as amended, establishes the provisions of the Plan. OPERS issues a publicly available financial report that includes financial statements and supplementary information. That report may be obtained by writing OPERS, P.O. Box 53007, Oklahoma City, Oklahoma 73105 or by calling 1-800-733-9008.

**CIMARRON COUNTY, OKLAHOMA  
NOTES TO THE FINANCIAL STATEMENT  
FOR THE FISCAL YEAR ENDED JUNE 30, 2005**

---

Funding Policy. The contribution rates for each member category are established by the Oklahoma Legislature and are based on an actuarial calculation which is performed to determine the adequacy of contribution rates. County employees are required to contribute between 3.5% and 8.5% of earned compensation. The County contributes between 5.0% and 10.0% of earned compensation. Elected officials could contribute between 4.5% and 10% of their entire compensation. The County contributes 10.0% of earned compensation for elected officials. The County's contributions to the Plan for the years ending June 30, 2005, 2004, and 2003 were \$119,097, \$126,680, and \$131,636, respectively, equal to the required contributions for each year.

**7. Other Post Employment Benefits (OPEB)**

In addition to the pension benefits described in the Pension Plan note, OPERS provides post-retirement health care benefits of up to \$105 each for retirees who are members of an eligible group plan. These benefits are funded on a pay-as-you-go basis as part of the overall retirement benefit. OPEB expenditure and participant information is available for the state as a whole; however, information specific to the County is not available nor can it be reasonably estimated.

**8. Contingent Liabilities**

Amounts received or receivable from grantor agencies are subject to audit and adjustment by grantor agencies, primarily the federal government. Any disallowed claims, including amounts already collected, may constitute a liability of the applicable fund. The amount, if any, of expenditures which may be disallowed by the grantor cannot be determined at this time; although, the County expects such amounts, if any, to be immaterial.

The County is a defendant in various lawsuits. Although the outcome of these lawsuits is not presently determinable, in management's opinion, the resolution of these matters will not have a material adverse effect on the financial condition of the County.

**9. Sales Tax**

In November 1992, Cimarron County voters approved a 1% sales tax effective November 30, 1992. On November 5, 1996, the voters extended the 1% sales tax through November 30, 2002. On April 2, 2002, a special election was held and the voters approved the continuing levying of the 1% sales tax for the period of December 1, 2002 through June 30, 2004. In addition to the continuing levy, on April 2, 2002, an additional 1% sales tax proposition was presented to the voters of Cimarron County. The combined 2% sales tax was approved by the voters for the

**CIMARRON COUNTY, OKLAHOMA  
NOTES TO THE FINANCIAL STATEMENT  
FOR THE FISCAL YEAR ENDED JUNE 30, 2005**

---

maintenance, operations, and capital improvements of the Cimarron Memorial Hospital and Nursing Homes. On February 24, 2004, a special election was held and the voters approved the continuing levying of the 2% sales tax for the period of July 1, 2004 through June 30, 2007. During the fiscal year, the County received \$290,145 in sales tax revenue that was apportioned to the County Hospital Sales Tax Fund.

**OTHER SUPPLEMENTARY INFORMATION**

**CIMARRON COUNTY, OKLAHOMA**  
**COMPARATIVE SCHEDULE OF RECEIPTS, EXPENDITURES, AND**  
**CHANGES IN CASH BALANCES—BUDGET AND ACTUAL—BUDGETARY BASIS—**  
**GENERAL FUND**  
**FOR THE FISCAL YEAR ENDED JUNE 30, 2005**

	General Fund			
	Original Budget	Final Budget	Actual	Variance
Beginning Cash Balances	\$ 323,413	\$ 323,413	\$ 323,413	\$ -
Less: Prior Year Outstanding Warrants	(12,940)	(12,940)	(12,940)	
Less: Prior Year Encumbrances	(10,568)	(10,568)	(8,367)	2,201
Beginning Cash Balances, Budgetary Basis	<u>299,905</u>	<u>299,905</u>	<u>302,106</u>	<u>2,201</u>
Receipts:				
Ad Valorem Taxes	358,342	358,542	379,671	21,129
Charges for Services	2,417	24,175	82,801	58,626
Intergovernmental Revenues	42,305	42,305	78,287	35,982
Miscellaneous Revenues	1,663	10,456	99,114	88,658
Total Receipts, Budgetary Basis	<u>404,727</u>	<u>435,478</u>	<u>639,873</u>	<u>204,395</u>
Expenditures:				
District Attorney	3,500	3,500	3,500	-
County Sheriff	163,189	171,982	165,107	6,875
County Treasurer	40,911	40,911	40,783	128
OSU Extension	2,355	2,355	2,345	10
County Clerk	56,293	56,293	55,643	650
Court Clerk	51,206	51,206	50,790	416
County Assessor	62,810	62,810	62,133	677
Revaluation of Real Property	22,454	22,454	22,040	414
Juvenile Shelter Bureau	1	1	-	1
General Government	54,499	54,499	37,233	17,266
Excise-Equalization Board	485	485	461	24
County Election Board	33,292	33,292	33,021	271
Insurance	214,363	214,363	204,555	9,808

continued on next page

The accompanying notes to the other supplementary information are an integral part of this schedule.  
See independent auditor's report.

**CIMARRON COUNTY, OKLAHOMA**  
**COMPARATIVE SCHEDULE OF RECEIPTS, EXPENDITURES, AND**  
**CHANGES IN CASH BALANCES—BUDGET AND ACTUAL—BUDGETARY BASIS—**  
**GENERAL FUND**  
**FOR THE FISCAL YEAR ENDED JUNE 30, 2005**

continued from previous page

	Original Budget	Final Budget	Actual	Variance
County Supt. Of Health	200	200	200	
Charity	1	1	-	1
County Audit Budget Account	6,920	6,920	6,920	-
Library Budget Account	4,251	4,251	4,251	-
County Hospital Budget	9,860	9,860	9,860	-
Total Expenditures, Budgetary Basis	726,590	735,383	698,842	36,541
Excess of Receipts and Beginning Cash Balances Over Expenditures, Budgetary Basis	\$ -	\$ -	243,137	\$ 243,137
Reconciliation to Statement of Receipts, Disbursements, and Changes in Cash Balances				
Add: Current Year Encumbrances			3,435	
Add: Current Year Outstanding Warrants			4,039	
Ending Cash Balance			\$ 250,611	

The accompanying notes to the other supplementary information are an integral part of this schedule.  
See independent auditor's report.

**CIMARRON COUNTY, OKLAHOMA  
 DETAILED SCHEDULE OF RECEIPTS, DISBURSEMENTS,  
 AND CHANGES IN CASH BALANCES – SINKING FUND  
 FOR THE FISCAL YEAR ENDED JUNE 30, 2005**

---

Beginning Cash Balance		\$	<u>57,270</u>
Receipts:			
Ad Valorem Tax			55,657
Miscellaneous			<u>550</u>
Total Receipts			<u>56,207</u>
Disbursements:			
G.O. Bonds			50,000
Interest Paid			7,325
County Judgments			25,000
Interest Paid			<u>6,058</u>
Total Disbursements			<u>88,383</u>
Ending Cash Balance		\$	<u><u>25,094</u></u>

The accompanying notes to the other supplementary information are an integral part of this schedule.  
 See independent auditor's report.

**CIMARRON COUNTY, OKLAHOMA  
NOTES TO OTHER SUPPLEMENTARY INFORMATION  
FOR THE FISCAL YEAR ENDED JUNE 30, 2005**

---

**1. Budgetary Schedules**

The Comparative Schedule of Receipts, Expenditures, and Changes in Cash Balances—Budget and Actual—Budgetary Basis, for the General Fund presents comparisons of the legally adopted budget with actual data. The "actual" data, as presented in the comparison of budget and actual, will differ from the data as presented in the Combined Statement of Receipts, Disbursements, and Changes in Cash Balances with Combining Information because of adopting certain aspects of the budgetary basis of accounting and the adjusting of encumbrances and outstanding warrants to their related budget year.

Encumbrance accounting, under which purchase orders, contracts, and other commitments for the expenditure of monies are recorded in order to reserve that portion of the applicable appropriation, is employed as an extension of formal budgetary integration in these funds. At the end of the year, unencumbered appropriations lapse.

**2. Sinking Fund Schedule**

Debt service receipts are derived generally from a special ad valorem tax levy and from interest earned on investments of cash not immediately required for debt service payments.

See independent auditor's report.



**INTERNAL CONTROL AND COMPLIANCE SECTION**



STATE OF OKLAHOMA  
OFFICE OF THE AUDITOR AND INSPECTOR

JEFF A. McMAHAN  
State Auditor and Inspector

**Report on Internal Control Over Financial Reporting and on Compliance and Other Matters  
Based on an Audit of Financial Statements Performed in Accordance With  
*Government Auditing Standards***

TO THE OFFICERS OF  
CIMARRON COUNTY, OKLAHOMA

We have audited the combined totals—all funds of the accompanying Combined Statement of Receipts, Disbursements, and Changes in Cash Balances of Cimarron County, Oklahoma, as of and for the year ended June 30, 2005, which comprises Cimarron County's basic financial statement, prepared using accounting practices prescribed or permitted by Oklahoma state law, and have issued our report thereon dated November 6, 2006. Our report on the basic financial statement was adverse because the statement is not a presentation in conformity with accounting principles generally accepted in the United States of America. Also, our report describes certain responsibilities of the State Auditor and Inspector's Office other than audit responsibilities. We conducted our audit in accordance with auditing standards generally accepted in the United States of America and the standards applicable to financial audits contained in *Government Auditing Standards*, issued by the Comptroller General of the United States.

Internal Control Over Financial Reporting

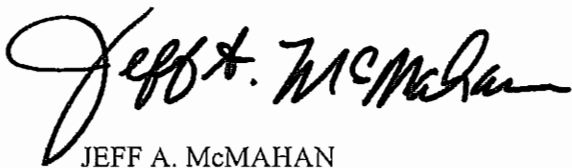
In planning and performing our audit, we considered Cimarron County's internal control over financial reporting in order to determine our auditing procedures for the purpose of expressing our opinion on the financial statement and not to provide an opinion on the internal control over financial reporting. However, we noted a certain matter involving the internal control over financial reporting and its operation that we consider to be a reportable condition. Reportable conditions involve matters coming to our attention relating to significant deficiencies in the design or operation of the internal control over financial reporting that, in our judgment, could adversely affect Cimarron County's ability to initiate, record, process, and report financial data consistent with the assertions of management in the financial statement. The reportable condition is described in the accompanying schedule of findings and responses as item 2000-1.

A material weakness is a reportable condition in which the design or operation of one or more of the internal control components does not reduce to a relatively low level the risk that misstatements caused by error or fraud in amounts that would be material in relation to the financial statement being audited may occur and not be detected within a timely period by employees in the normal course of performing their assigned functions. Our consideration of the internal control over financial reporting would not necessarily disclose all matters in the internal control that might be reportable conditions and, accordingly, would not necessarily disclose all reportable conditions that are also considered to be material weaknesses. However, we consider the reportable condition described above to be a material weakness.

### Compliance and Other Matters

As part of obtaining reasonable assurance about whether Cimarron County's financial statement is free of material misstatement, we performed tests of its compliance with certain provisions of laws, regulations, contracts, and grant agreements, noncompliance with which could have a direct and material effect on the determination of financial statement amounts. However, providing an opinion on compliance with those provisions was not an objective of our audit, and accordingly, we do not express such an opinion. The results of our tests disclosed no instances of noncompliance or other matters that are required to be reported under *Government Auditing Standards*.

This report is intended solely for the information and use of the management of Cimarron County and should not be used for any other purpose. This report is also a public document pursuant to the Oklahoma Open Records Act (51 O.S., section 24A.1 et seq.), and shall be open to any person for inspection and copying.

A handwritten signature in black ink that reads "Jeff A. McMahon". The signature is written in a cursive, flowing style.

JEFF A. McMAHAN  
State Auditor and Inspector

November 6, 2006

**CIMARRON COUNTY, OKLAHOMA  
SCHEDULE OF FINDINGS AND RESPONSES  
FOR THE FISCAL YEAR ENDED JUNE 30, 2005**

---

**Findings related to the Report on Internal Control Over Financial Reporting and on Compliance and Other Matters Based on an Audit of Financial Statements Performed in Accordance With Government Auditing Standards**

**Finding 2000-1 - All Offices - Segregation of Duties (Repeat Finding)**

Criteria: Demonstration of accountability and stewardship are overall goals in evaluating management's accounting for funds. To help ensure a proper accounting of funds, the duties of receiving, receipting, recording, and depositing cash and checks should be segregated.

Condition: Based on inquiries and observation of County personnel, it was noted that the duties of receiving, receipting, recording, and depositing collections were not adequately segregated for offices handling cash transactions.

Effect: This condition could result in unrecorded transactions, misstated financial reports, undetected errors, or misappropriation of assets.

Recommendation: We recommend management be aware of this condition and realize that the concentration of duties and responsibilities in a limited number of individuals is not desirable from a control point of view. Under these conditions, the most effective controls lie in management's knowledge of office operations and periodic review of those operations.

Views of responsible officials and planned corrective actions: We concur with the auditor's comments, and will conduct periodic reviews of office operations.